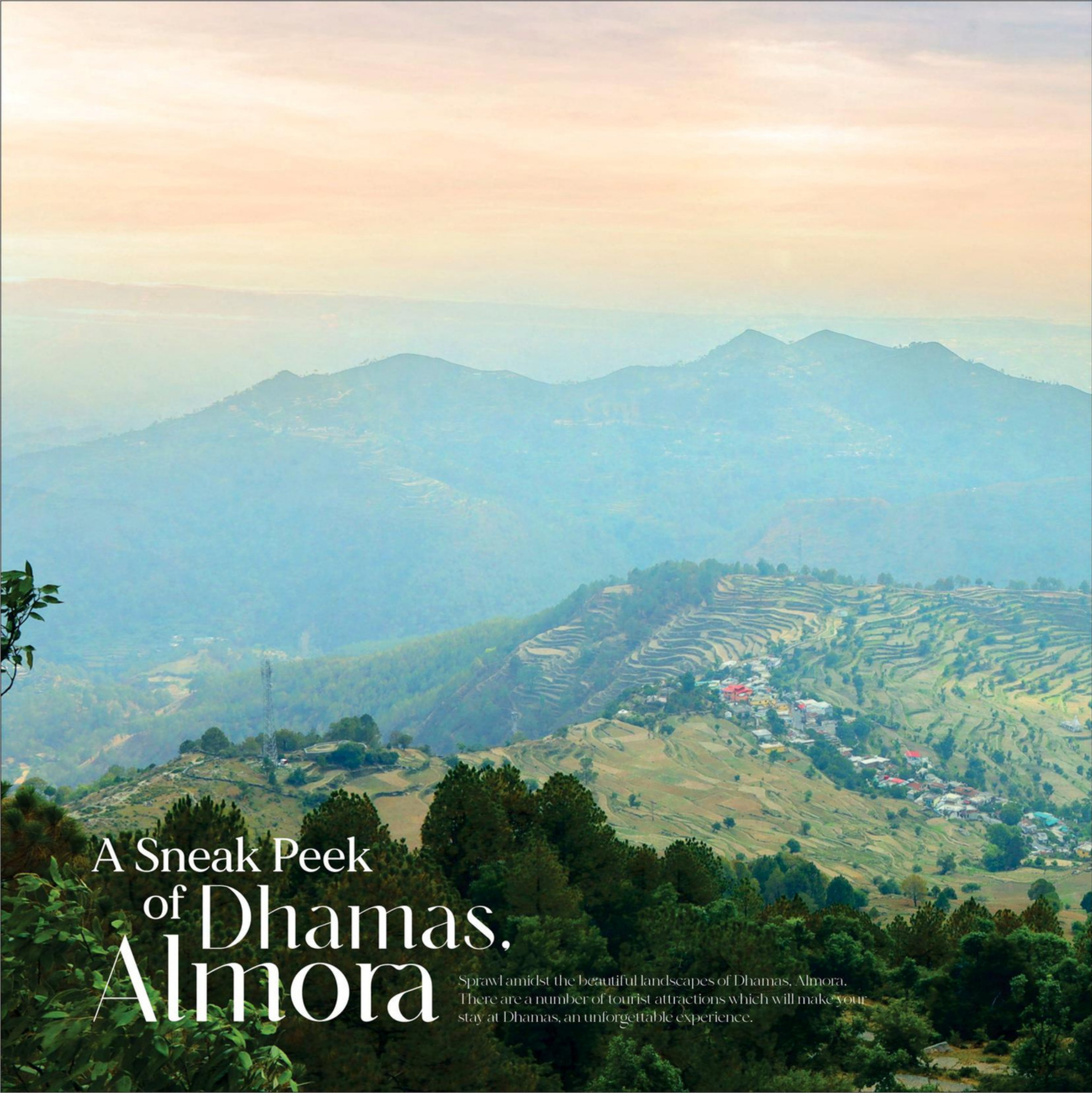


A large, circular cross-section of a tree trunk is the central focus of the image. It displays a clear pattern of concentric growth rings, with a darker outer bark layer and lighter inner wood. The wood grain is visible, showing a radial pattern. The entire piece is set against a light beige background that has a subtle, circular wood-grain pattern radiating from the center of the tree slice.

Unmatched
Elegance



A Sneak Peek of Dhamas, Almora

Sprawl amidst the beautiful landscapes of Dhamas, Almora. There are a number of tourist attractions which will make your stay at Dhamas, an unforgettable experience.





Find
SOLACE In
the **woods**





Sprawled amidst the beautiful Dhamas landscapes, the Wood Villas are close to famous tourist attractions to make your stay here an enchanting and unforgettable experience.





Experience
LUXURY amidst
woods

- ✧ European architectural concept
- ✧ Fully constructed out of wood
- ✧ Luxurious landscapes
- ✧ Located on a hilltop
- ✧ Stunning view of Himalayan range on one side and valley on the other
- ✧ Independent and spacious villas
- ✧ 24-hour water and power supply





HIMALAYAN View with Every Villa

- ✧ Lease available for 3 years
- ✧ Fully renewable lease
- ✧ Villas available on lease on a yearly basis
- ✧ 30 days accommodation free once a year



Find your
SECOND Home
amidst **woods**



The alluring beauty of Dhamas with a panoramic view of the Himalayas will let you dive into magnificent snowy peaks and a serene ambience. At Wood Villas, you:

- ✧ Live amidst an abundance of flora and fauna
- ✧ Enjoy the serene ambience of the Himalayas
- ✧ Stay close and connected to nearby destinations
- ✧ Experience delicious cuisines and rich cultural heritage



Find a
BUSINESS
opportunity amidst
woods



Wood Villas is not just a second home, but an investible asset too. Many investors convert their vacation homes into homestays and witness massive revenue generation.



Why Choose
Almora
as Your **Second**
Home



The alluring beauty of Dhamas with a panoramic view of the Himalayas will let you dive into magnificent snowy peaks and a serene ambience. At Wood Villas, you:

- Live amidst an abundance of flora and fauna
- Enjoy the serene ambience of the Himalayas
- Stay close and connected to nearby destinations
- Experience delicious cuisines and rich cultural heritage



Homestays An
Investment For
your BUSINESS
& SOUL



The reader will be distracted by the readable content of a page when looking at its layout. The point of using Lorem Ipsum is that it has a more-or-less normal distribution of letters, as opposed to using 'Content here, content here', making it look like readable English. Many desktop publishing packages and web page editors now use Lorem Ipsum as their default model text, and a search for 'lorem ipsum' will uncover many web sites still in their infancy. Various versions have evolved over the years, sometimes by accident, sometimes on purpose injected humour and the like



AMENITIES



Gated Community



Lush Green Gardens



Common Areas



Excellent Road Connectivity
On Road Property **150mtrs** Road Frontage



Restaurant
Multi Cuisine Bar



Kids Play - Zone Area



All Weather Pool With Café



Multi - Purpose Hall
For Functions And Corporate Events

NEARBY TOURIST ATTRACTIONS



Kanchi Dham
Baba Neem Karoli Dham



Almora City



Ranihhet
Golf course



Hawalbagh Research
Centre



Nainital



Bhimtal



Sun Temple



Chitai Golu Devta Temple





SPECIFICATION

✘ STRUCTURE

RCC and Steel Base with Wooden Walls.

✘ FLOORING

Engineered wooden flooring.

✘ ELECTRICAL

3 phase connection with separate distribution board.
Separate electrical room in stilt floor with space for stabilizer provision.

✘ GENERAL AMENITIES

Video door phone at entrance door.
All bathroom pipe lines with state-of-the-art technology and core cutting methodology.
Restaurant
Yoga Facility

✘ DOORS & WINDOWS

ENTRANCE DOOR: Teak wood frame with teak wood shutters and polish finish.
BED ROOM DOOR: Teak wood frame with skin molded flush door and polish finish.
TOILET DOOR: Teak wood frame with waterproof flush door and polish finish on the bed room side.
WINDOWS: Premium quality UPVC/ Wooden frame with glazed shutters and necessary safety grills.

✘ BATHROOMS

Premium anti-skid vitrified tiles flooring.
Premium quality wall tile up to false ceiling height.
Premium quality CP and sanitary fixtures of international standard.
EWC, single lever diverter, over/under counter wash basin of white color.
Accessories shall include twin hook, towel rod, paper holder, health faucet.

✘ MATERIAL

English Wood and German Pine.

✘ PAINTING

INTERNAL PAINTING: Wooden Polish.
EXTERNAL PAINTING: Wooden Polish.

✘ SECURITY

CCTV Camera available





PAYMENT Plans

10% Booking Amount

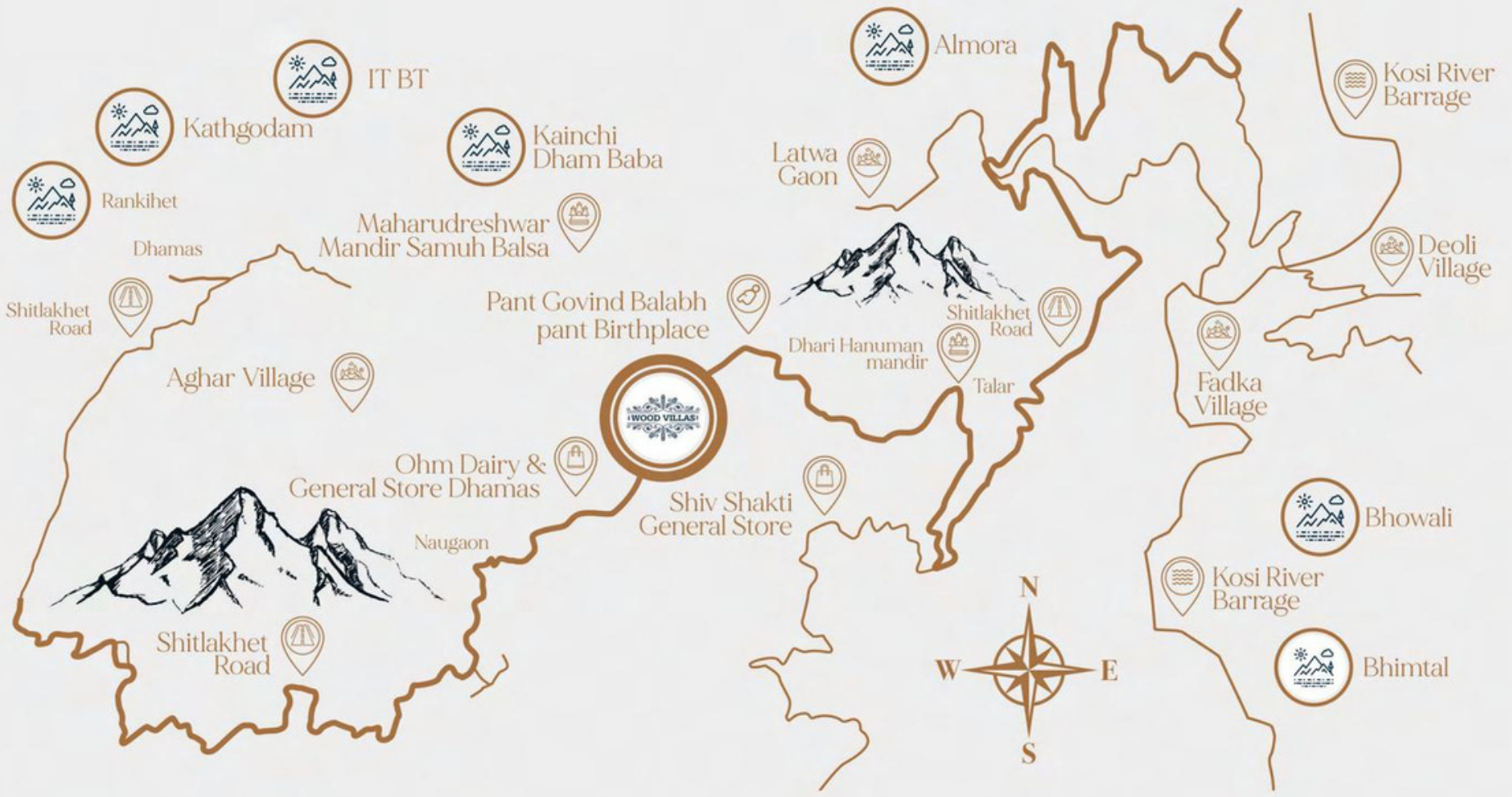
40% within 30 days (Land Registry)

50% *3 months equal EMI (PDC Cheque)

OTHER CHARGES BASIC VILLA AMOUNT

CAR PARKING	1,50,000/-
EDC	50,000/-
IDC	50,000/-
IFMS	20,000/-
ELECTRIC CONNECTION	(As per actual electric meter)

GREAT RETURNS ON INVESTMENTS (Contact for More Details)





LOCATION
MAP

THE PROJECT SITE PLAN



LEGEND

1. SITE ENTRY
2. GUARD ROOM
3. PARKING ZONE
4. LIBRARY
5. CAFETERIA
6. CLUB HOUSE
7. MULTIPURPOSE HALL
8. STAFF QUARTERS
9. ELECTRICAL ROOM
10. GAZEBO (OUTDOOR SEATING SPACE)
11. YOGA/MEDITATION
12. OAT/OPEN LIBRARY
13. POOL
14. KIDS POOL
15. SUN DECK
16. PREMIUM COTTAGES (FUTURE DEVELOPMENT)
17. COTTAGES (FUTURE DEVELOPMENT)
18. KIDS PLAY ZONE

MASTER PLAN



UNIT PLAN



AREA-603SQ. FT.



THE CLUB HOUSE



Multi-cuisine
Restaurant



Heated
Swimming Pool



Gymnasium



Spa



Billiards/Pool
Table



Table Tennis



Library



Card Room

KEY FEATURES



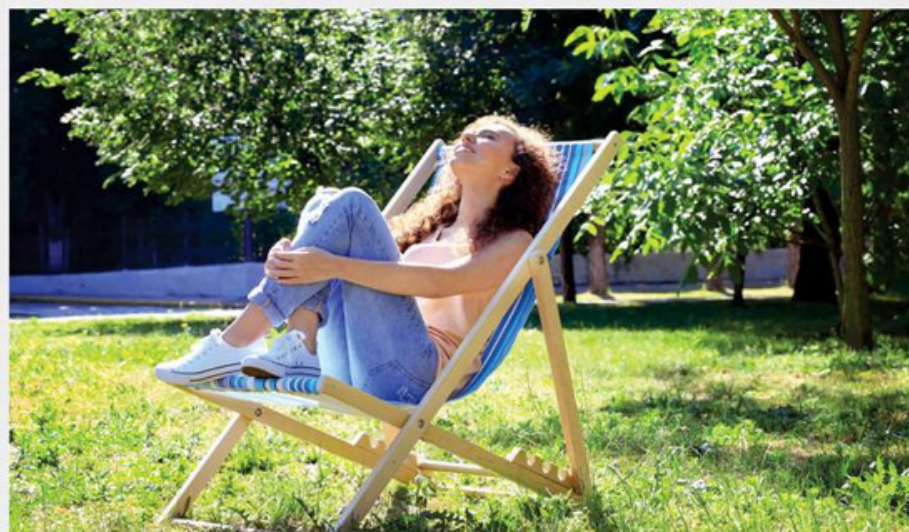
All Year Excellent Weather



Work From Home Facility



Excellent Mobile And
Internet Connectivity



Future Extensions



Trekking . Jungle Camping



Safari



Cycling



E-Library





SPECIAL FEATURES



These villas are available for even on a yearly basis. Maintenance howsoever, is upon us.



Leases are guaranteed and available for 3 years. After the three years tenure, it can be renewed.



The best part of the lease is a 30 days free accommodation once in a year.



Marketed By :

ARMED FORCES WELFARE HOUSING ORGANIZATION

+919643799899

info@afwho.org

www.afwho.org

Address . 232, 2nd Floor, US Complex Jasola, New Delhi-110076